



COIL THREAD

M A S C O . N E T

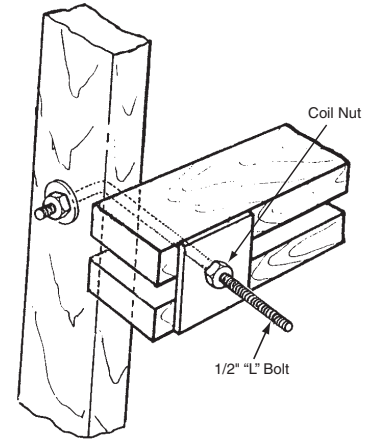
TIEING/HANDSET

NEW

Wale Bolt Assembly

This Wale Bolt Assembly consists of 1/2" "L" bolt, a round cut washer, a Flat Washer and two 1/2" Coil Nuts. The assembly is used to fasten wales to crane-handled gang forms. One size assembly will secure wales up to 10" thick. The bolt has 8" of coil thread on the long end and 1-1/2" of coil thread on the short end.

The short end of the bolt is inserted through a 9/16" hole drilled through the center of the stud. The cut washer and 1/2" nut fastens the bolt to the stud. The long end of the bolt extends between the wales and allows the wales to be drawn tightly against the stud using a flat washer and the second 1/2" nut. Wale Bolt assemblies are normally spaced at four feet intervals along the wales. The safe working load of the assembly is dependent on the wale members being used.



No.	Wt (lbs)
DS B14W	1.74

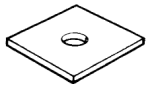
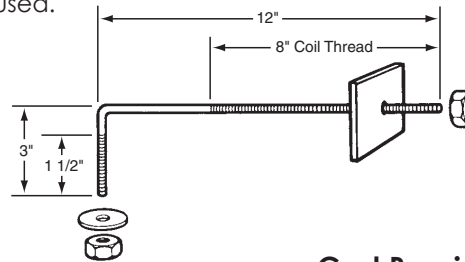


Plate Washer

For use with coil bolts, she bolts, taper ties and coil nuts. Washer sizes are designed to provide adequate bearing against wood form members. Maximum space between strongbacks should not exceed rod diameter plus 1/4".



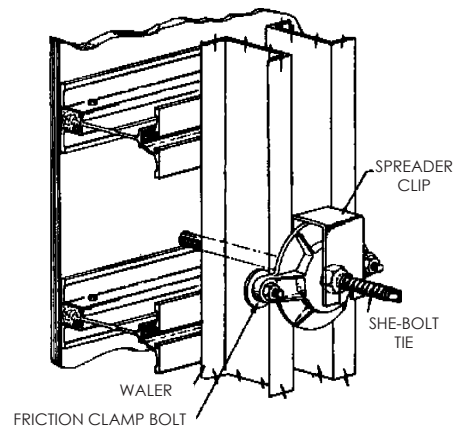
Cast Bearing Washer

Cast Bearing Washers are used with she bolts or taper ties with steel, aluminum or wood forms. SWL based on maximum spacing of 3" between strongbacks. SWL 25,000 lbs.

No.	Rod Diameter	Wt (lbs)
SY 31525	1-1/4"	3.0

No.	Size	Rod Diameter	Wt (lbs)
CFA PW331412	3" x 3" x 1/4"	1/2"	0.65
CFA PW331434	3" x 3" x 1/4"	3/4"	0.65
CFA PW441412	4" x 4" x 1/4"	1/2"	1.15
CFA PW441434	4" x 4" x 1/4"	3/4"	1.10
CFA PW443834	4" x 4" x 3/8"	3/4"	1.71
CFA PW553834	5" x 5" x 3/8"	3/4"	2.66
CFA PW661234	6" x 6" x 1/2"	3/4"	5.10
CFA PW55121	5" x 5" x 1/2"	1"	3.55
CFA PW66121	6" x 6" x 1/2"	1"	5.10
CFA PW6634114	6" x 6" x 3/4"	1-1/4"	8.45
CFA PW6610112	6" x 6" x 1"	1-1/2"	10.00

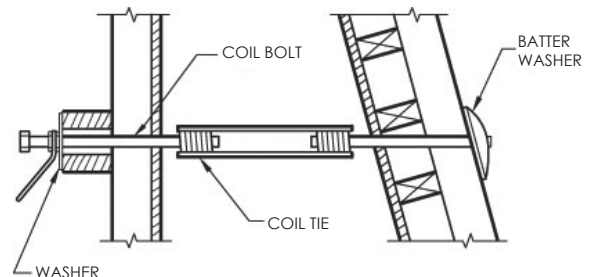
Other sizes available on request.



Battered Washer

Battered washers are used with either coil bolts, she bolts and taper ties when the wales are at an angle to the tips. Permits any angle from 90° to 45°. SWL is based on maximum spacing of 3" between strongbacks.

No.	Rod Diameter	Wt (lbs)
SY 31626	1-1/4"	3.5
SY 31627	1-1/2"	6.0



SWL provides a factor of safety of approximately 2 to 1.