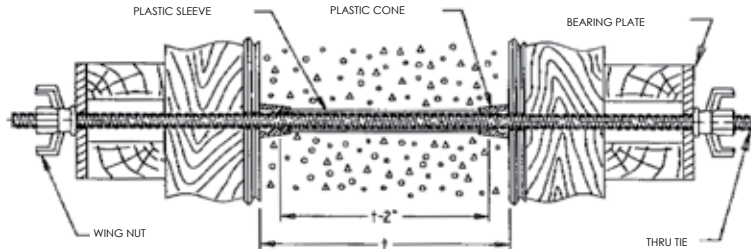


# DYWIDAG THREAD

## TIEING/HANDSET



### Threadbar®

Threadbar is hot-rolled, high strength steel with two flat sides in the thread pattern that allow gripping and turning of the bars with a crescent wrench. The flat sides facilitate self-cleaning with each stripping operation. Threadbar® is bendable around a 6 diameter pin.

No.	Size	SWL Tension (lbs)	Wt/Lf (lbs)
DSI 78TB	7/8"	39,200	1.7
DSI 58TB	5/8"	19,100	1.0



### DCR Bar

The DCR is manufactured from high strength steel and fully threaded. DCR bar is considered more ductile than standard coil rod. DCR Bar is bendable around a 6 diameter pin and is also weldable allowing its use for welded waterstop. DCR bars provide a very economical solution for conventional and special tying/anchoring application. All hardware is interchangeable with thread bar.

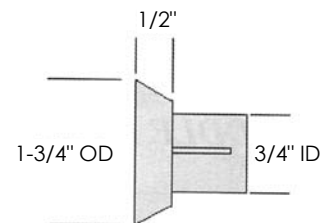
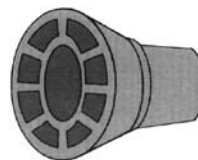
No.	Size	SWL Tension (lbs)	Wt/Lf (lbs)
DSI 58DCR	5/8"	18,400	1.0



### Push-Fit Cones

This spreader cone is used with 3/4", class 200 PVC pipe to allow 5/8" threaded rod to pass through the concrete untouched.

No.	Wt (lbs)	Qty/Ctn
DS 34PF	0.15	500



SWL provides a factor of safety of approximately 2 to 1.

# DYWIDAG THREAD

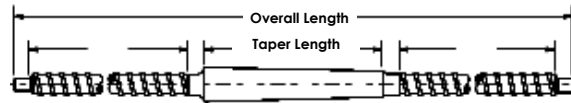


## TIEING/HANDSET

### DYWIDAG Taper Tie

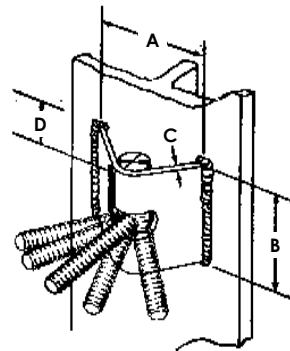
Taper Ties employ one piece all steel tapering. This results in a stronger, much lighter system that uses the same size hardware at each end.

No.	Size	Size Taper L	Size Overall L	Wt (lbs)	SWL Tension (lbs)
<b>7/8"</b>					
DSI B20F28230	1-1/4" to 1"	30"	51"	12.0	32,500
DSI B20F28236	1-1/4" to 1"	36"	57"	13.5	32,500
<b>5/8"</b>					
SY 722125	3/4" to 5/8"	24"	49"	5.0	18,400
SY 722104	3/4" to 5/8"	16"	41"	4.0	18,400



### Welded Angle Bracket

Manufactured from high strength steel. Strengths are determined on full fillet welds along bracket. The threaded pin swivels up to ± 45°. The welded angle bracket is mainly used on H-piles below grade for one-sided forming applications. Mascons assumes no liability for the welding connection. See technical bulletin for SWL reduction factor information.



No.	Size
DSI 58AB	5/8"
DSI 78AB	7/8"

Rod Diameter	A	B	C	D	SWL Tension (lbs)	Wt (lbs)
in.	in.	in.	in.	in.	klps	lbs.
5/8	5.25	4	.25	2	19.1	4.0
7/8	7	6	.50	2	39.2	8.5

SWL provides a factor of safety of approximately 2 to 1.

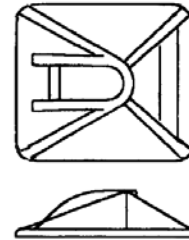
# DYWIDAG THREAD

## TIEING/HANDSET

### Batter Washer

Used when walers are at an angle to the tips. Permits any angle from 90° to 45°. Maximum spacing between strongbacks should not exceed rod diameter plus 1/4".

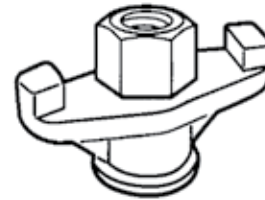
No.	Rod Diameter	Size	Wt (lbs)
DSI 58BW	5/8"	5"x 3-1/2"	1.80
DSI 78BW	7/8"	6"x 5-1/4"	4.00



### Cast Wing Nut

Fabricated from ductile steel. Fast threaded for quick assembly and stripping. Utilized when frequent removal and application of nut is required.

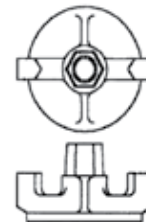
No.	Size	SWL Tension (lbs)	Wt (lbs)
DSI 58WN	5/8"	19,100	0.60
DSI 78WN	7/8"	39,200	1.00



### Wing Nut Bracket

Fabricated from ductile steel. Wing nut and plate are together as one piece unit. Maximum spacing between strongbacks should not exceed rod diameter plus 1/4".

No.	Size	SWL Tension (lbs)	Wt (lbs)
DSI 58WNB	5/8"	19,100	1.10
DSI 78WNB	7/8"	39,200	2.80



### Waterseal Washer

Neoprene Waterseal Washers may be installed on inside tie rods to help eliminate water seepage along the tie. Generally specified when ties are used to form water containment structures.

No.	Inside Tie Rod Diameter
DSI 58WW	5/8"
DSI 78WW	7/8"



SWL provides a factor of safety of approximately 2 to 1.

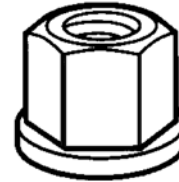
# DYWIDAG THREAD



## TIEING/HANDSET

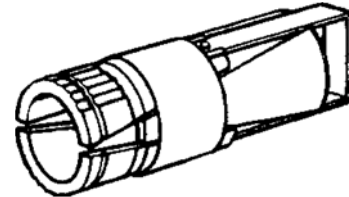
### Cast Hex Nut

No.	Size	SWL Tension (lbs)	Wt (lbs)
DSI 58HN	5/8"	19,100	0.30
DSI 78HN	7/8"	39,200	1.10



### Expansion Anchor

Expansion anchors can be used with 5/8" THREADBAR®. These anchors are used in many applications including one sided forming off existing concrete or temporary tiedowns in existing slabs. The fast Dywidag thread pattern (2½ threads per inch) provides quick installation and stripping. Available in two bore hold diameters 1⅜" and 1½", simply determine the estimated compressive strength of existing concrete and the depth of the hole. Safe Working Load Information available on request.



No.	Size	Wt (lbs)
DSI 58EA	5/8"	1.00

### Coupler

Provides an efficient and safe alternative to conventional forming of protruding DCR bar. Allows for fast stripping and works safely by completing the splice of a later time.



No.	Size	Hole Diameter	Wt (lbs)
DSI 58C	5/8"	19,100	1.20
DSI 78C	7/8"	39,200	2.50

SWL provides a factor of safety of approximately 2 to 1.