

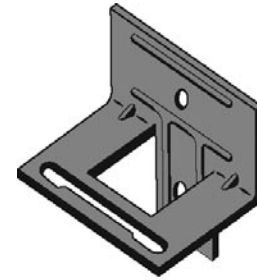
# Seismic Ties and Anchors

## DA213 SEISMIC VENEER ANCHOR PLATE

Designed to anchor masonry to a structure accommodating rigid insulation up to 3 inches (75mm) thick. Used with DA213S Seismic Pintle or DA213QT Lite Duty Seismic pintle.

Available in 14 (1.9mm) or 12 (2.7mm) gage with leg to accommodate rigid insulation, in Hot Dip Galvanized or Stainless Steel finish. Needs 3/4 inch (19mm) to 1 inch (25mm) minimum air cavity.

For attachment to concrete, block or brick see DA5213S.



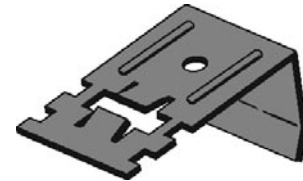
DA213 Seismic Veneer Anchor Plate

## DA213S SEISMIC VENEER ANCHOR PINTLE

Designed to anchor masonry to a structure accommodating rigid insulation, with provision for holding joint reinforcement in the veneer. Used with DA213 Plates, DA519 Seismic Adjustable Eye Plates, Seismic Dur-O-Eye or Seismic Ladur-Eye joint reinforcement.

Available in 12 (2.7mm) and 11 (3mm) gage with 3-1/2 inch (90mm) and 4-1/2 inch (113mm) lengths 2 inches (50mm) wide with a 2 inch (50mm) bent leg in Hot Dip Galvanized or Stainless Steel finish.

Has shear lugs to engage a piece of joint reinforcement, either Seismic Ladur or Pencil Rod.



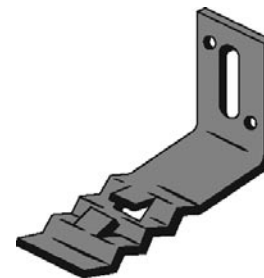
DA213S Seismic Veneer Anchor Pintle

## DA431 SEISMIC VENEER ANCHOR

Designed to anchor masonry to a structure when the air cavity is less than 1 inch (25mm).

Available in 14 (1.9mm) or 12 (2.7mm) gage x 1-1/4 inch (32mm) wide in 3-1/2 inch (90mm), 4-1/2 inch (113mm) and 5-1/2 inch (138mm) lengths, with Hot Dip Galvanized or Stainless Steel finish.

Has shear lugs to engage a piece of joint reinforcement, either Seismic Ladur or Pencil Rod. For attachment to concrete, brick or block see DA5431.

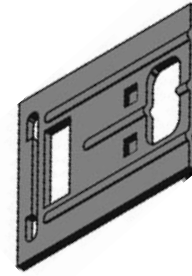


DA213 Seismic Veneer Anchor

## DA519 ADJUSTABLE SEISMIC WALL EYE PLATE

Designed to tie multiwythe masonry walls, provide adjustment between wythes and allow for joint reinforcement in the veneer. Used with DA213 Seismic Pintle.

Available in 16 gage (1.5mm), with lengths to accommodate up to and including 3 inches of rigid insulation, in Hot Dip Galvanized or Stainless Steel finish.

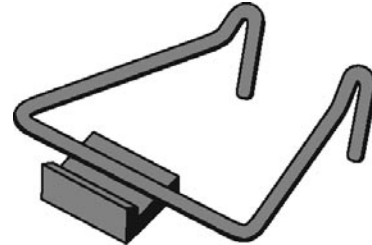


DA519 Adjustable Seismic Wall Eye Plate

## DA213QT SEISMIC PINTLE

Designed to anchor masonry to a structure with joint reinforcement in the veneer. Used with DA213 Veneer Anchor Plates, DA518 Adjustable Cavity Wall Eyes, Dur-O-Eye or Ladur-Eye joint reinforcement.

Available in 3/16 inch (5mm) wire x 3 inch (75mm), 4 inch (100mm), 5 inch (125mm), 6 inch (150mm), or 7 inch (180mm) lengths with welded Quake Tie (Lengths do not include the Quake Tie), in Hot Dip Galvanized or Stainless Steel finish, with clip to engage a piece of joint reinforcement.



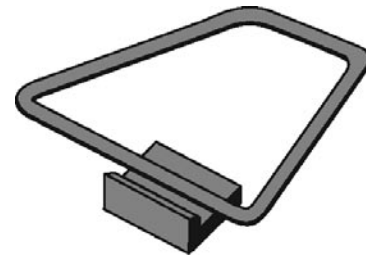
DA213QT Seismic Pintle

## DA700QT SEISMIC TRIANGULAR TIE

Designed to anchor masonry to a structure with joint reinforcement in the veneer. Used with DA207 MSSA Veneer Anchor Screw-on Strap, DA210 Veneer Anchor Screw-on Plate or DA709 Column Anchor Weld-on.

Available in 3/16 inch (5mm) wire 3 x 3 inches (75mm x 75mm), 4 x 4 inches (100mm x 100mm), 5 x 5 inches (125mm x 125mm), 6 x 6 inches (150mm x 150mm), 7 x 7 inches (180mm x 180mm), and 7 x 9 inches (180mm x 230mm) with welded Quake Tie (Lengths do not include the Quake Tie), in Hot Dip Galvanized or Stainless Steel finish, with clip to engage a piece of joint reinforcement.

Quake Tie is welded in off-set position to enable Triangular Tie to be engaged to DA207, DA210, or DA709.



DA700QT Seismic Triangular Tie

## Material Specifications and Finish

Material	Specification	Finish
Carbon Steel Sheet Metal	ASTM A1008, ASTM A109 or ASTM A1011	Mill Galvanized ASTM A653 Hot Dipped Galvanized ASTM A153, Class B2
Stainless Steel Sheet Metal	ASTM A167 Type 304	N/A
Carbon Steel Wire	ASTM A82	Mill Galvanized (ASTM A641) Hot Dipped Galvanized ASTM A153, Class B2
Stainless Steel Wire	ASTM A580 Type 304	N/A

## Warranty

Seller makes no warranty of any kind, express or implied, except that the goods sold under this agreement shall be of the standard quality of seller, and buyer assumes all risk and liability resulting from the use of the goods, whether used singly or in combination with other goods. Seller neither assumes nor authorizes any person to assume for seller any other liability in connection with the sale or use of the goods sold, and there is no oral agreement or warranty collateral to or affecting this transaction.