

WATERSTOP



POUR IN PLACE

Hydrophilic

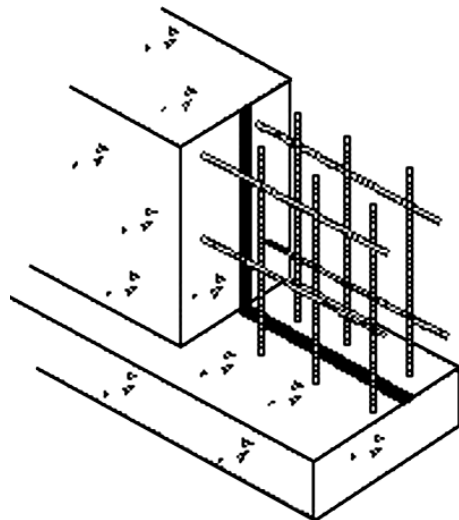
Hydrophilic waterstop is a chemically modified natural rubber. This patented process chemically binds hydrophilic agent to the rubber. This permits the seal to undergo controlled expansion when in the presence of moisture. This expansion capability provides a "double locking" waterstop. One from rubber's natural resilience and one from the expansion. Any void within the limits of the products volume expansion coefficient, will be filled by the expansion of the seal when it is hydrated. Excellent durability and resistance to chemicals. It can perform in a wide range of solutions such as salt water and cement water. The material does not contain any toxic substance or heavy metals and is environmentally safe.

MC-2010MN

Pre-formed rubber strip with stainless steel net. Used to replace conventional PVC waterstops in construction joints and control joints. Will withstand high hydrostatic head and intermittent exposure to rain or water. Expands up to 2 times by volume. Embedded wire mesh promotes vertical expansion vs longitudinal. Attach with screws, nails, glue, P-201 (may need nails or screws with P-201). Can be used on rough concrete with P-201. NSF certified for potable water.

Minimum Use Conditions:

- Wall/slab thickness greater than 9" (10" recommended).
- Minimum 4" concrete coverage - 6.5 ft. wall height (check with Masons for variations).
- Between double row of rebar.
- Below grade or water present either side of wall/slab joint.



No.	Size	Qty/Ctn	Wt/Ctn (lbs)
ADE MC2010MN	20 mm x 10 mm (.78" x .39")	82 lf	17.50

MC-2005M

Pre-formed rubber strip with stainless steel net. Use between joints or structural elements where expected joint opening does not exceed 0.05". Will withstand intermittent exposure to rain or water. Expands up to 2 times by volume. Embedded wire mesh promotes vertical expansion vs longitudinal. Attach with glue or P-201 (may need screws with P-201). Can be used on rough concrete with P-201.

Minimum Use Conditions:

- Wall/slab thickness greater than 9" and less than 24".
- Minimum 4" concrete coverage - 6.5 ft. wall height (check with Masons for variations).
- Between double row of rebar.
- Below grade or water present either side of wall/slab joint.
- Hydrostatic head less than 50 ft.

No.	Size	Qty/Ctn	Wt/Ctn (lbs)
ADE MC2005M	20 mm x 5 mm (.79" x .20")	165lf	35.00

Contact Adhesive

2141 Adhesive: is easy-brushing, general purpose rubber adhesive with excellent water resistance. Good for concrete, steel, neoprene, butyl and natural rubber. Surface must be clean, dry and dust free. Apply adhesive to both surfaces and allow to initially dry, typically 5-10 minutes. Press surfaces together. Bond life is up to 15 minutes. Coverage is 82 lf/qt.

No.	Size	Wt (lbs)
ADE Q2141	1Qt	2.50