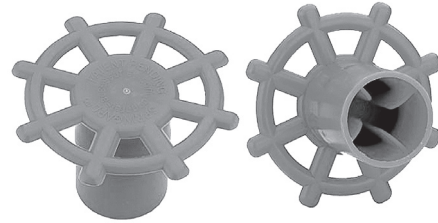


SPRINGARD™

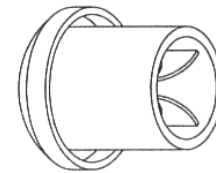
The Springard™ design mimics the structure of bones. Bone is light yet strong; its porous interior carries tension only when it's necessary leaving space elsewhere. In addition to a steel plate, the cylinder has an Energy Absorbing Material which independent lab tests has shown can absorb a bigger portion of the energy generated at impact during a fall. Springard™ is designed to be stronger, lighter and more cost effective, compared to the traditional covers currently on the market. Meets CAL-OSHA 1712 requirements. To be used only up to 7-1/2 feet.



No.	Rebar Size	Wt (lbs)	Qty/Ctn
CFA SPRINGARD	#3 to #8	.34	100

HORIZONTAL

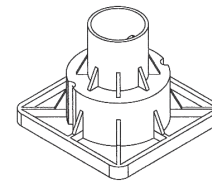
A safe solution to covering the ends of exposed rebar. Also works well on smooth bar or exposed threaded rods. **Not to be used for impalement protection.**



No.	Rebar Size	Wt (lbs)	Qty/Ctn
DD BG10	#3 to #8	.08	250
DD BG20	#9 to #18	.12	50

SUPROTEK®

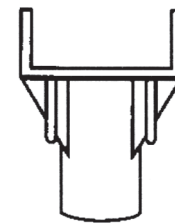
These rebar guards contain a curved steel plate which provides protection against falls that occur from an angle, preventing hazardous impalement. CAL OSHA approved per #1716AG. To be used only up to 7-1/2 feet.



No.	Rebar Size	Wt (lbs)	Qty/Ctn
DD PC110	#3 to #8	.53	100
DD PC200	#9 to #14	.72	50

2X4 REBAR CAP

Made of rugged, sturdy and reusable plastic. When used properly, will withstand a 250 pound weight dropped from 10 feet without the rebar protruding. Works in vertical, incline and horizontal applications. Meets CAL-OSHA 1712 requirements. When force is applied, the impact is distributed evenly over the entire length of the lumber.



No.	Rebar Size	Wt (lbs)	Qty/Ctn
DD CARNIE	#3 to #9	.22	100