

TECHNICAL DATA SHEET

Product: **MASCOCAP**
Revision Date: 7/22/2019

DESCRIPTION

MASCOCAP Rebar Guard provides essential safety on the job site where exposed, protruding, reinforcing steel (rebar) is found to prevent impalement. MASCOCAP is a steel reinforced, safety orange color guard that conforms to State and Federal safety regulations.

MASCOCAP is designed for use at or above grade, not to exceed 7-½ vertical feet of fall exposure to the top of the MASCOCAP rebar guard.

FEATURES

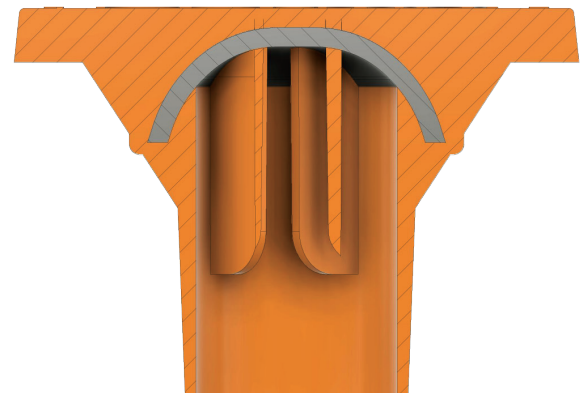
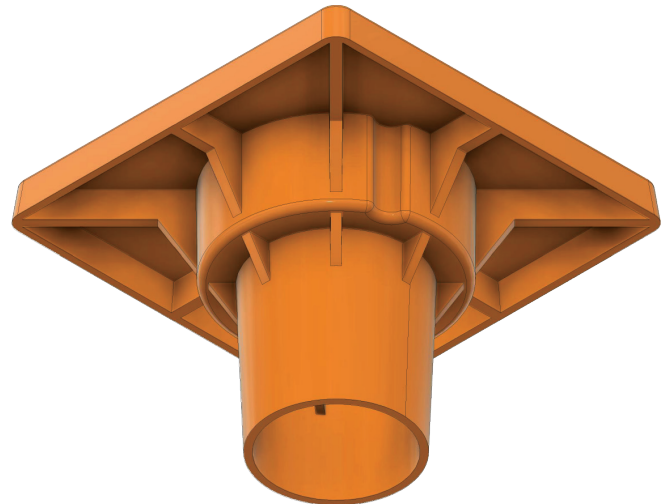
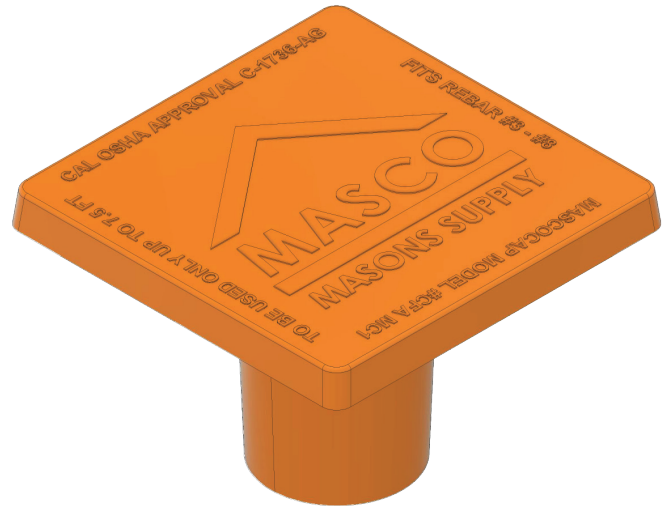
- Placed on individual, reinforced steel to prevent impalement.
- Steel reinforced, safety orange color, high-visibility, meets CAL/OSHA section 1712 and 1505.
- Complies with Federal OSHA 1926.701 (b).
- Made of engineered high-impact plastic.
- 16 sq inch top surface area aids in protection.
- Self-centering fins in the collar secure the MASCOCAP to the individual reinforced steel.
- Fits a range of diameters (#3 to #8 rebar).
- Inverted, cup-formed steel insert seats perpendicular to rebar.

PACKAGING

BOX QTY	ACCOMMODATES BAR SIZES
50ea	#3 to #8 Rebar diameter

INSTALLATION

1. MASCOCAP Rebar Guards are designed to be used on rebar sizes #3 to #8. DO NOT USE MASCOCAP ON ANY OTHER SIZE REBAR.
2. Place the MASCOCAP's female collar over the exposed protruding rebar end. Ensure the MASCOCAP is securely attached to the rebar by pressing it down all the way until it is firmly seated and the internal metal plate contacts the rebar. The top of the MASCOCAP should rest perpendicular to the rebar, and the collar parallel to the rebar. The fins inside the collar secure the MASCOCAP to the rebar. On larger rebar you will need to twist the MASCOCAP as you press down until it is firmly seated.
3. The MASCOCAP should be placed on every piece of protruding exposed rebar end.
4. MASCOCAP can be used on all exposed protruding



MASCOCAP | technical datasheet

rebar ends on horizontal, vertical and overhead surfaces to protect works from impalement.

CAUTIONS

1. At any time, any worker that observes exposed protruding rebar ends at grade or at the same surface as exposed protruding reinforcing steel or other similar projections, stop work immediately. Install, reinstall or adjust the MASCOCAP before work resumes.
2. MASCOCAP is a single use item. Any MASCOCAPs involved in a personnel fall incident or struck by a load or weight shall be removed from service and replaced.
3. If MASCOCAP is unable to secure and self-center on a rebar end due to damage of; the internal stabilizing fins, collar, or other components of the rebar guard, a more severe injury may occur, including impalement. Remove the MASCOCAP from the rebar and replace.

INSPECTION

1. Inspect your MASCOCAP before each use. Check for any damage to the top, collar, and internal fins. If damaged from use or rough handling, remove from service. If there is any doubt, remove from service and consult your safety manager or supervisor.
2. Failure to install, use and/or remove MASCOCAP in a safe manner by skilled and trained craftsmen can result in serious injury, including death. Until the MASCOCAP is properly installed, use alternate fall protection devices or means. Ask your supervisor for proper training.

MASCOCAP CARE AND STORAGE

1. Treat your MASCOCAP with care. Use care when stripping, shipping or storing. Use only MASCOCAPs that are in good condition.
2. During storage, protect MASCOCAPs from direct weather, sunlight, excessive heat and cold.

TECHNICAL SERVICE

For additional technical details or instructions, consult the "MASCOCAP REBAR GUARD INSTALLATION INSTRUCTIONS AND WARNINGS GUIDELINES" sheet included within the MASCOCAP product package, or contact:

MASONS SUPPLY COMPANY
2637 SE 12th Ave.
Portland, OR 97202
(503)234-4321, FAX (503)234-5606
www.masco.net

MASCOCAP DISCLAIMER

MASCOCAP does not guarantee your safety. Masons Supply does not guarantee that no injury will occur if a person falls onto the MASCOCAP while working above grade, at grade or same level as the projection. Use of this device is only expected to reduce the likelihood of a serious injury and limit the penetration of the rebar into a person's body if a fall occurs. Other means should be considered to limit the likelihood of a fall as well, which may include but are not limited to; fall arrest and fall positioning equipment, approved fall protection systems, guardrails, safety rail posts, protection screens or other approved means. Risks inherent to falling on to MASCOCAPs and to the ground from heights are assumed entirely by the employee and their employer. **THE EMPLOYER HAS A NON-DELEGABLE DUTY TO PROVIDE A SAFE WORKPLACE. EACH EMPLOYER WHOSE EMPLOYEES USE OR WORK AROUND OR ABOVE A MASCOCAP REBAR GUARD, SHALL INFORM ITS EMPLOYEES OF THE CONTENT OF THESE INSTRUCTIONS. SUCH INFORMATION SHALL BE PROVIDED TO EMPLOYEES IN A MANNER THAT ALLOWS THEM TO UNDERSTAND THE APPROPRIATE USE OF MASCOCAP AND THE HAZARDS ASSOCIATED WITH IMPALEMENT.** This system meets the requirements of CAL-OSHA and US Federal OSHA for Rebar Protection at the time of this publication.

DISCLAIMER OF WARRANTIES AND LIMITATIONS OF LIABILITY

MASONS SUPPLY CO. (Seller) warrants that if any goods supplied prove defective in workmanship or material, that Seller shall replace them or refund their purchase price. THIS WARRANTY IS MADE IN LIEU OF ANY AND ALL OTHER WARRANTIES, EXPRESSED OR IMPLIED, INCLUDING THE WARRANTIES OF MERCHANTABILITY AND/OR FITNESS WHICH ARE HEREBY DISCLAIMED. IT IS UNDERSTOOD AND AGREED THAT BUYER'S SOLE REMEDY, AND THEREFORE SELLER'S LIABILITY, WHETHER IN CONTRACT, TORT, UNDER ANY WARRANTY, IN NEGLIGENCE, OR OTHERWISE SHALL BE LIMITED TO THE RETURN OF THE PURCHASE PRICE PAID BY PURCHASER OR REPLACEMENT OF ANY DEFECTIVE GOOD'S SOLD BY SELLER AND UNDER NO CIRCUMSTANCES SHALL SELLER BE LIABLE FOR SPECIAL, INDIRECT OR CONSEQUENTIAL DAMAGES. THE PRICE STATED FOR THE GOODS IS A CONSIDERATION IN LIMITING SELLER'S LIABILITY. Before application, the User shall determine the suitability of the product for his intended use and User assumes all risks and liabilities whatsoever in connection therewith. The terms of this paragraph may not be orally modified. THERE ARE NO WARRANTIES WHICH EXTEND BEYOND THE FACE HEREOF.